

# High Power Contacts



VPC's new 150 Amp contact is designed for high amperage and power testing applications.

## Features and Benefits

- High Power/Current contacts rated up to 150 Amps\*
- Incorporated Safety Interlock – requires engagement before powering contacts
- Contacts are IP rated 2X when fully assembled
- 6 position Standard/90 Series with strain relief
- 4 position iCon modules for use in i1 or iCon connector\*\*
- Up to 10,000 cycles

\*Tested and designed to use with [Cooner Wire CW6044-14\(UL Rated\)](#), [AS 105-14\(Non-UL\)](#), or equivalent.

\*\*Some physical limitations may apply and additional parts may be needed, please consult VPC for assistance in maximizing your system's performance.



# High Power Contacts

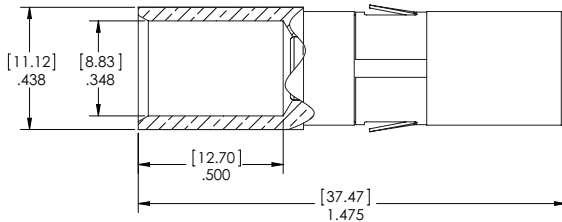


## Specifications

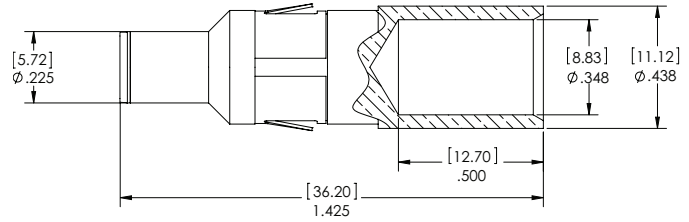
<b>Operating Current</b>	150 Amp Continuous using 2 AWG wire
<b>Contact Resistance</b>	0.35 mOhms
<b>Mating Force</b>	>5.0 lbs Max [2.27 Kg]
<b>Operating Voltage</b>	600V
<b>Contact Body</b>	<b>Female (RCV)</b> Cu, Internal Contact Beams – Cu over Ag <b>Male (ITA)</b> Cu, IP Tip - Thermoplastic
<b>Contact Plating</b>	30μ" Au over 100μ" Ni
<b>Operating Temperature</b>	-40°C to 125°C
<b>T-Rise</b>	150 Amps at +40°C 125 Amps at +30°C
<b>Contact Termination</b>	Crimp
<b>Cycle Life</b>	10,000 cycles



Receiver Contact, Part # 610 149 101



ITA Contact, Part # 610 150 101



Part #	Description
610 149 101*	High Power Contact, Receiver, 150 Amp, 2 AWG, 30μ" Gold
610 150 101*	High Power Contact, ITA, 150 Amp, 2 AWG, 30μ" Gold
7-221 902 000-036	High Power Patchcord, Receiver, 150 Amp, 36", 2 AWG, Single Ended
7-222 902 000-036	High Power Patchcord, ITA, 150 Amp, 36", 2 AWG, Single Ended
510 104 307	High Power Module, Receiver, 6 Position
510 108 281	High Power Module, ITA, 6 Position
510 160 124**	High Power Module, Receiver, iCon, 4 Position
510 161 124**	High Power Module, ITA, iCon, 4 Position
510 109 549	Strain Relief Plate for High Power Standard/90 Series ITA and Receiver Modules
910 102 116	Tool, Crimp Kit (Pneumatic Crimp Tool, Locator, and Die), High Power, Receiver and ITA
910 102 117	Tool, Crimp Kit (Locator and Die), High Power, Receiver and ITA
910 112 129	Tool, Extraction, High Power, Receiver and ITA

\*Tested and designed to use with [Cooner Wire CW6044-14\(UL Rated\)](#), [AS 105-14\(Non-UL\)](#), or equivalent.

\*\*Some physical limitations may apply and additional parts may be needed, please consult VPC for assistance in maximizing your system's performance.

For multiple conductor correction factors please reference <http://www.coonerwire.com/amp-chart/>.