



► **VPC G20**

VPC's G 20 Mass InterConnect interface delivers reliable performance in an innovative platform. Designed on 0.80" (20.32 mm) centers to correspond with PXI system slot requirements, the G20 system provides the convenience of direct connection to instrument modules, enabling pull-through removal of connector modules and instrumentation from the chassis backplane.



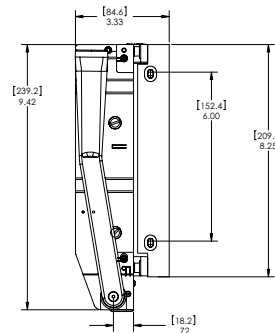
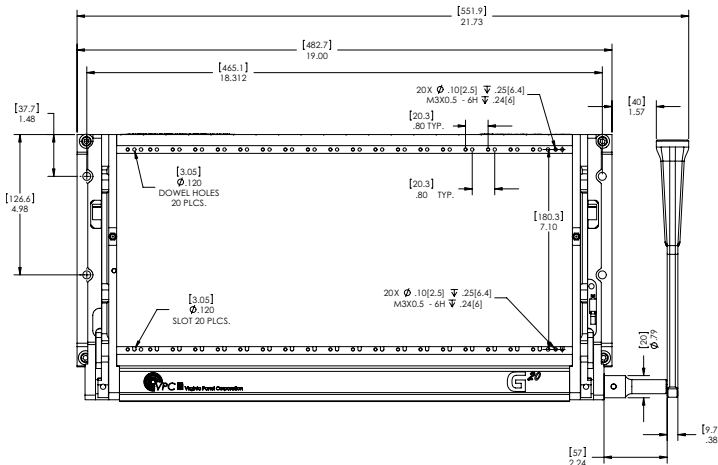
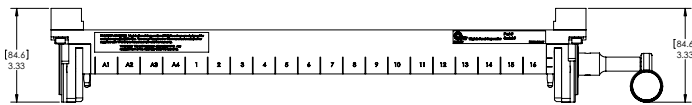
The Standard for Pull-Through Systems since 2004

► **Features and Benefits**

- Unique "Pull-Through" Design with Carrier Modules
- Connector Modules Rated to 20,000 Cycles
- Direct Connection to Instrument Front Panel Connectors
- Direct Mount to PXI chassis
- Proven VPC QuadraTrack Engagement Mechanism
- Quick Changeover of Instrumentation by Removal of InterConnect Module Adapter Assembly
- Protects Delicate Instrument Connectors and Reduces Cost Associated With Low Cycle-Life Interconnects
- Compact System Size
- Less Wiring With Direct, Plug-In Connection
- Reliable DUT Connections beyond 20,000 Mating Cycles

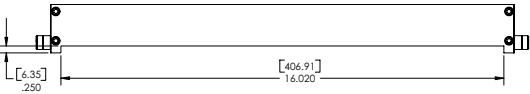
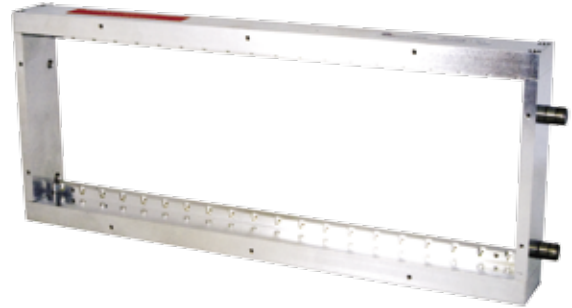
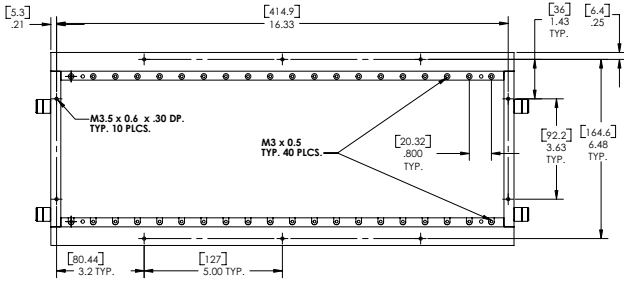
Specifications

Weight	7.5 lbs [3.41 Kg]
Frame	Anodized Aluminum
Slide Material	Nickel Plated Steel
Linkage, Handle, Latch	Stainless Steel
Available Module Slots	20 Positions
Cycle Life	20,000 Cycles
Temperature	-55°C to 85°C
Maximum Weight Support	25 lbs. @ 6" (11 Kg @ 15.25 cm)

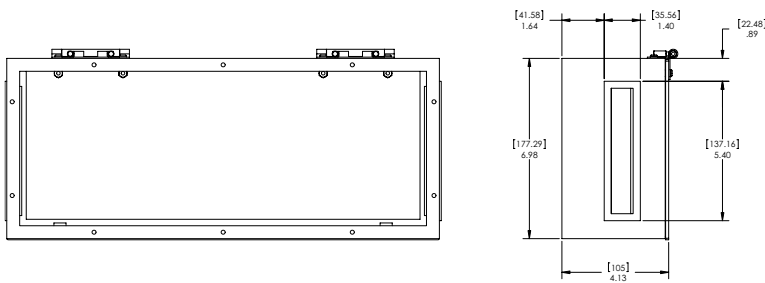
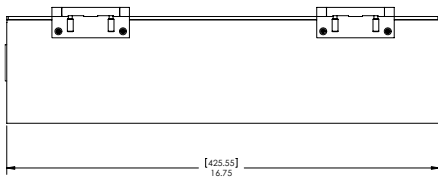


PART #	DESCRIPTION
--------	-------------

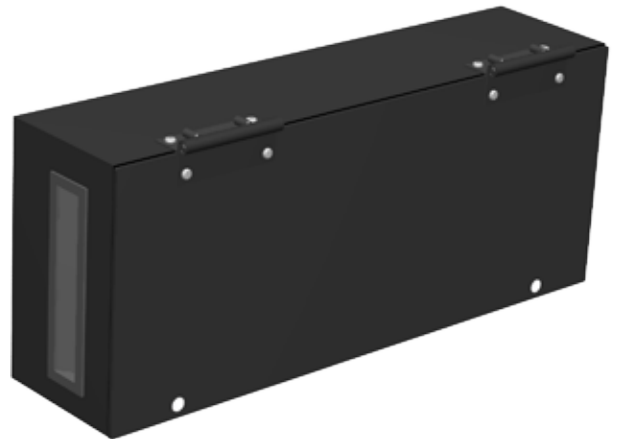
310 120 114	Receiver, G20, 20 Module, for Rohde & Schwarz CompactTSVP System, with Flush Mount Hangers
310 120 119	Receiver, G20, 20 Module, for Rohde & Schwarz CompactTSVP System, with Standard Hangers
410 120 115	ITA, G20, 20 Module, Standard Modules, for Rohde & Schwarz CompactTSVP
410 112 790	Enclosure, 20 Module, Hinged Cover Plate, 4" Deep
510 130 109	Module, Receiver, QuadraPaddle, 96 Pin Adapter, Rohde & Schwarz CompactTSVP
510 130 110	Module Adapter, Receiver, Rohde & Schwarz CompactTSVP



▶ **ITA, 2100 20 MODULE • PART # 410 120 115**



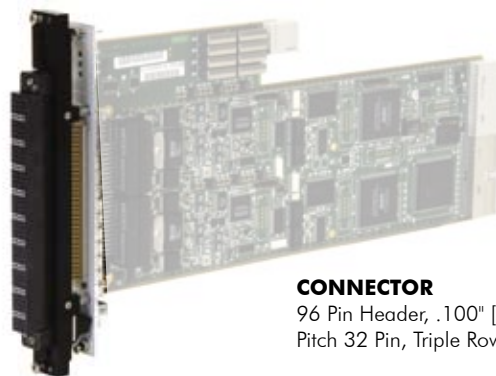
▶ **ITA ENCLOSURE • PART # 410 112 790**



UTILIZES QUADRAPADDLE TECHNOLOGY

The VPC QuadraPaddle adapter assembly provides 96 pins of direct, plug-in connectivity .

▶ **QUADRAPADDLE ADAPTER • PART # 510 130 109**
MODULE ADAPTER • PART # 510 130 110



CONNECTOR
 96 Pin Header, .100" [2.54 mm]
 Pitch 32 Pin, Triple Row